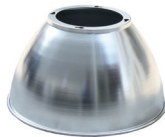


HIGH BAY



80° aluminium reflector (/AR80)



100° aluminium reflector (/AR100)



Frosted cover (/FC)



Reeded lens reflector (/RL)

Designed for manufacturing or storage areas as well as offices, warehouses, retail stores, hangars, exhibition, concert halls and industrial premises generally.

- A range of lumen outputs from 9300-38000lm
- Additional wattages are available please contact technical
- Colour Temperatures: 4000k
- Colour: Silver (/SLV)
- Available with Dimming (/STD/DALI/SDIM)
- Available with Remote Emergency (/RME3/RME3-ST /RME3-PRO)
- Integral LED Meanwell driver
- Mounting: Chain suspension (supplied by others)
- Reflectors: Reeded Lens, Frosted Cover, 80° Reflector or 100° Reflector (/RL/FC/AR80/AR100)
- 120° Reflector available to special order (/AR120)
- Die cast aluminium body
- Dimensions: (Diameter x Height) Ø500 x (486 to 639)mm

Industrial

Product	MIHB Industrial LED Luminaire			
Light Source	LED			
System Power Luminaire lumens (4000K)	/100W 9300lm	/200W 19000lm	/300W 28500m	/400W 38000lm
Size	Ø500mm			
Driver	/STD Non Dimming	/DALI DALI Dimming		/SDIM Switch Dimming
Colour Temperature	/840 4000k			
Colour	/SLV Silver			
Reflector Options	/RL Reeded Lens	/FC Frosted Cover	/AR80 80° Reflector	/AR100 100° Reflector
Emergency	/RME3 Remote three hour maintained emergency	/RME3-ST Remote three hour maintained self test emergency		/RME3-PRO Remote three hour DALI addressable emergency
To Specify: MIHB LED, 200W, Ø500mm, 19000lm, 4000k, LED suspended finished silver as standard supplied with reeded lens reflector and complete with standard control gear. Part code: MIHB/200W/19000lm/STD/840/SLV/RL/WS				

