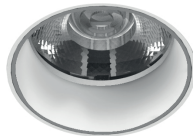
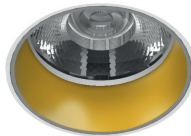


# MIDN-90



White Reflector  
/WHR



Gold Reflector  
/GDR



Black Reflector  
/BKR

**A cylindrical surface mounted light made from aluminium with interchangeable decorative rings designed for a variety of lighting applications.**

- A lumen outputs of 3600lm
- Colour Temperatures: 2700k - 3000k - 4000k
- Beams Lens: 18° ,30° or 45° (18D/30D/45D)
- Colours: White or Black (/WH/BK)
- Available with Dimming (/STD)
- With Honey comb mesh (/HC)
- Optimized passive cooling system
- Mountings: Surface mounted or Wire suspended (/SM/WS)
- Reflector colours: White, Gold and Black (WHR/GDR/BHR)
- CRI80 as standard, CRI90 Available
- Aluminium powder coat
- Dimensions: (Diameter x Length) Ø90 x 200mm

Product	MIDN-90 Surface mounted LED		
Light Source	LED		
System Power <small>Luminaire lumens (4000K)</small>	/28W 3600lm		
Size <small>(Length x Diameter)</small>	200mm x Ø90mm		
Driver	/STD Non Dimming		
Colour Temperature	/827 2700k	/830 3000k	/840 4000k
Reflector Colours	/WHR White Reflector	/GDR Gold Reflector	/BKR Black Reflector
Beam Lens	/18D 18 Degrees	/30D 30 Degrees	/45D 45 Degrees
Colour	/WH White		/BK Black
Emergency	n/a		
<small>To Specify: MIDN-90, 28W, 4000k, 3600lm LED downlight with black housing finish and Gold Ring, with 18 degree narrow beam lens, surface mounted and Standard non dimming. Part code: MIDN-90/LED/28W/3600lm/STD/840/BK/18D/GDR/SM</small>			

Side Profile View Dimensions

