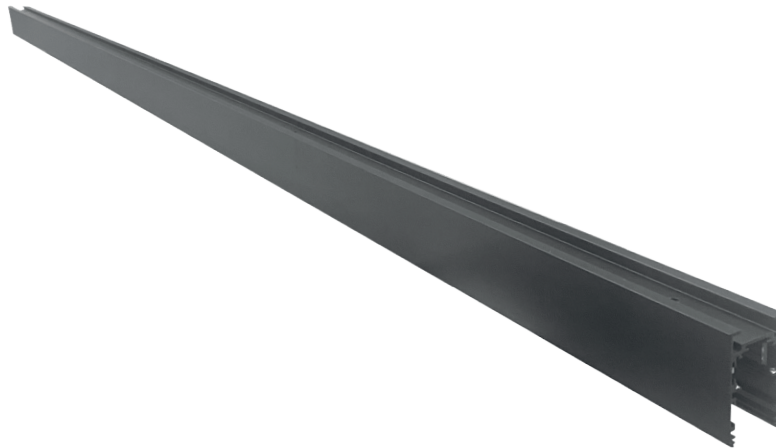
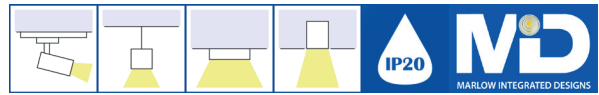


MAG-48V TRK



The MAGNETIC TRK SYSTEM is design to be compatible with the MAG-48V TRK-15, MAG-48V TRK-8, MAG-48V TRK-LINDA and the with the tracks and linears being able to attached on the same system.

- Colours: Matt White or Matt Black (/WH/BK)
- The optimal rail connections is no more than 40 meters
- Connectors: See previous page for more details (/VIL/VEL/LL/TM/CS/HL) * If required*
- Compatible with any brand external 48V output constant voltage switching power supply
- Magnetic End Caps (/MC)
- Mountings: Plaster-in, Surface mounted, Wire Suspended or Rod Suspended (/P/SM/WS/RS)
- IP Rating: IP20
- Section View Dimensions: See image below
- Dimensions: Standard Magnetic Track Length - 0.5M, 1.0M, 1.5M or 2.0M
- Please contact technical department for more information

Product	MAG-TRK Magnetic Track System										
Dimensions	See image to the right										
Size Lengths	/0.5M		/1M		/1.5M		/2M				
Connectors *If required*	/LL	/HL		/VEL		/VIL		/TM		/CS	
Colour	/WH White					/BK Black					
Mountings	/P Plaster-in		/SM Surface Mounted		/RS Rod Suspended			/WS Wire Suspended			
To Specify: Magnetic Track with 0.5M length, colour black, surface mounted with 2 Vertical inner L splicing and 2 Magnetic end caps. Part code: MAG-TRK/0.5M/2VIL/2MC/SM/BL											

