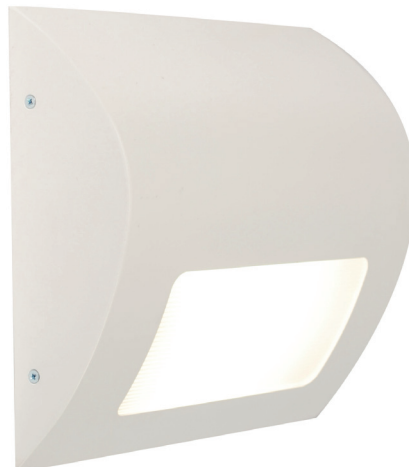


Recessed



An anti-ligature surface mounted luminaire suited for IP44 installations in correction centres, hospitals, prisons, care units and other establishments.

- A lumen output of 1000lm
 - Colour Temperatures: 3000k - 4000k - 5000k
 - Available with Uplight (/UL)
 - Available with Night light facility (/NL)
 - Available with Dimming (/STD/DALI/SDIM/MDIM)
 - Available with Emergency (/ME3/ME3-ST/ME3-PRO)
 - Diffuser Options: Opal Polycarbonate (/OP)
 - Dimensions: 300mm x 300mm x 85mm (L x W x D)
- The Kestrel Circular is an anti-ligature fitting
 - A lumen output of 2250lm with 26.2W
 - Colour Temperatures: 3000k - 4000k
 - Available as a circular option (/KEST-C)
 - Available with Dimming (/STD/DALI/SDIM/MDIM)
 - Available with Emergency (/ME3/ME3-ST/ME3-PRO)
 - Diffuser Options: Opal Polycarbonate (/OP)
 - Dimensions: Ø500mm x 116mm (L x D)

Product	MI/KEST/BH Surface LED Luminaire			
Lamp	LED			
Lamp Power <small>Luminaire lumens (4000K)</small>	/8.5W 1000lm			
Size	300 x 300 x 85mm			
Driver	/STD Non Dimming	/DALI DALI Dimming	/SDIM Switch Dimming	/MDIM Mains Dimming
Colour Temperature	/830 3000k	/840 4000k		/850 5000k
Colour	/WH White			
Diffuser Options	/OP Opal Diffuser			
Emergency	/ME3 Three hour main- tained emergency	/ME3-ST Three hour maintained self test emergency		/ME3-PRO Three hour DALI addressable emergency
To Specify: KEST BH LED, 8.5W, 4000k, 1000lm LED surface white supplied complete with standard control gear and opal diffuser. Part code: MI/KEST/BH/LED/8.5W/1000lm/STD/840/WH/OP				

Kestrel Circular (/KEST-C)

