

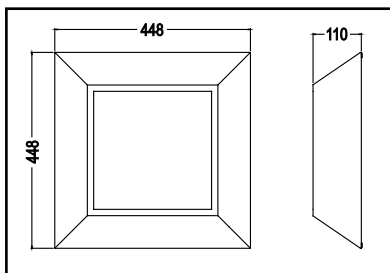
KEST ANTI LIGATURE RANGE

Suitable for use in secure establishments

CLEANROOM
MEDICAL &
SECURE



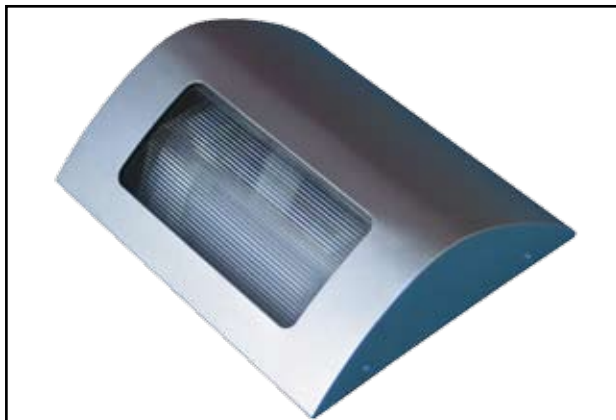
KEST/SQ 226/HF/OP/WH Square option



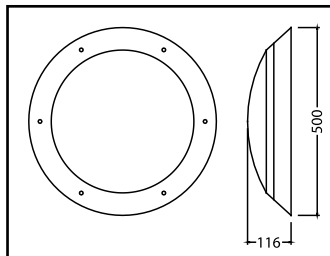
(KEST/SQ) Dimensions



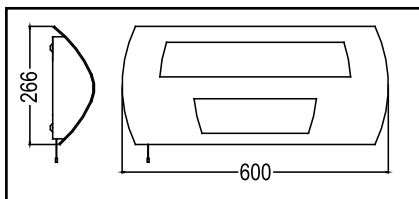
KEST/R 138/HF/OP/WH Round version in white



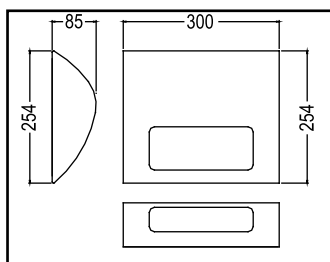
KEST/BH 118/HF/PP/DL/SLV Downlight bedhead option finished silver. Ideal for bedhead lighting as supplied to University student accommodation



(KEST/R) Dimensions



(KEST/BH 18/36CF) Dimensions (UDL)



(KEST/BH 118CF) Dimensions

Description

The Kest range of IP44 anti-ligature luminaires is suitable for correction centres, hospitals, prisons, care units and other establishments where there may be a risk of self harm. Tamper resistant fixing screws retain the front fascia and the whole range design uses curved or angled profiles therefore reducing the possibility of ligature.

General Features

- (R) Round or (SQ) Square versions with a (SRB) semi recess bezel available on the Round version only
- (BH) Bedhead version with choice of (DL) downlight only or (UDL) up & down lighting
- Manufactured from aluminium and steel
- Sealed to IP44
- Painted (WH) white, (SLV) Silver or to any (RAL) colour
- Supplied with (HF) high frequency gear as standard with optional (DIM) 1-10v, Switch Dim or DALI dimming
- (NL) 7w compact fluorescent night light option available
- A choice of impact resistant (PP) Prismatic or (OP) Opal panels
- Tamper proof screw fixing

Installation

Screw fixed as standard

Connections

Supplied complete with standard terminal block.

Emergency Conversion Reference

(ME3) Emergency luminaires are supplied with 3 hour packs (ME3/ST) self test emergency packs are available.

How to specify

For example: KEST/R 282D/HF/WH/PP for a round surface mount luminaire designed to accommodate 1 x 28w 2D lamp operated by high frequency control gear. Supplied complete with a prismatic panel retained within a white bezel frame secured by tamper proof screws

ORDERING INFORMATION - For other sizes/lamp types/finishes/styles not listed please call us

Reference Number	Nominal size l x w x h	Lamp & Wattage	Control Gear Options		Paint Options		Diffuser Options		Additional Options			Emergency Option
			HF	DIM	WH	SLV	PP	OP	NL	DL	UDL	
	mm	CF-2D-T5C										
KEST/R 282D	Ø500 x 116	1 x 28w 2D	•	1-10v	•	•	•	•	•	•	•	•
KEST/R 382D	Ø500 x 116	1 x 38w 2D	•	1-10v	•	•	•	•	•	•	•	•
KEST/R 40T5C	Ø500 x 116	1 x 40w T5C	•	•	•	•	•	•	•	•	•	•
KEST/R 226CF	Ø500 x 116	2 x 26w CF	•	•	•	•	•	•	•	•	•	•
KEST/SQ 282D	448 x 448 x 110	1 x 28w 2D	•	/	•	•	•	•	•	•	•	•
KEST/SQ 382D	448 x 448 x 110	1 x 38w 2D	•	/	•	•	•	•	•	•	•	•
KEST/SQ 226CF	448 x 448 x 110	2 x 26w CF	•	/	•	•	•	•	•	•	•	•
KEST/BH 118CF	300 x 254 x 85	1 x 18w CF	•	/	•	•	•	•	•	•	•	Remote
KEST/BH 18/36CF	600 x 266 x 100	1 x 18w CF 1 x 36w CF	•	/	•	•	•	•	•	•	•	•
KEST/BH linear	Designed to suit your length & lamp requirements		•	•	•	•	•	•	•	•	•	•

When ordering quote reference number followed by essential & specific options. Standard dimming is 1-10v, for switch dim or DALI dimming please specify

Tel: 01494 437962

Fax: 01494 462657

Email: sales@midlighting.co.uk

Due to ongoing research and development specifications are subject to change without prior notice. Some availability subject to minimum order quantity